

**MISSION
CRITICAL
PRINTING
SOLUTION**



**RELIABLE
COMPACT
VERSATILE**



**PRINTRONIX®
LP654C
A4 COLOR LED
PRINTER**

www.primtronix.com



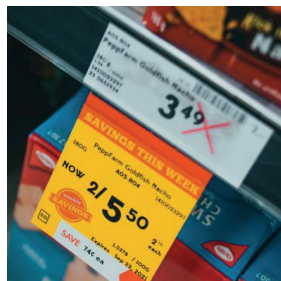
Compact and industrial, with massive performance.

The Printronix LP654C gets the job done, enabling you to get on with yours.

Your business deserves an industrial-grade printer that helps it grow, and the LP654C delivers. Built to meet the high demands of industrial market applications, this rugged and durable device provides the speed, flexibility, and reliability needed in mission-critical situations.

Taking mere seconds to print from idle, users can avoid production delays and disruptions with the quickest “first to print” and print speeds up to 35 pages per minute. The diverse media handling capabilities of the LP654C enable businesses to print on-demand a broad range of documents, labels, banners, signage, and more that may otherwise need to be outsourced.

The space saving design of the LP654C allows it to fit into a variety of office or industrial spaces while delivering best of class print quality and durability. The high duty-cycle, low operating cost, and robust design make the LP654C an ideal fit for businesses looking to reliably and economically print high-volume and/or high-coverage output.





Whatever your business the LP654C is built to perform

When users require versatility and dependability, the LP654C is there to get the job done. It's designed to work as hard as you do, providing years of reliable performance.

- Grocery Signage & Labeling
- GHS Chemical
- Hotels & Conference Centers
- Order Pick/Pack
- Warehouse Shelf & Floor Labeling
- Product Labelling
- Retail Banners/Signage
- Educational Materials
- Safety & Compliance Documents
- Healthcare/Medical Printing & Labeling

Why choose the LP654C?

The LP654C is a powerful choice for businesses needing a reliable, high-quality printer that is cost effective and capable. Despite being the world's most compact A4 color printer it also offers the most versatile media handling.

- **Reliability** - With 70% more metal componentry than the average desktop laser printer and a 600k page rated lifespan, the LP654C is the most robust A4 device on the market.
- **Unrivaled TCO** - Designed to print, print and print, its long life and high duty cycle are supported with separate toners and drums to ensure the optimum usage of all consumables and lower TCO.
- **Diverse media handling capabilities** - The LP654C's straight paper path ensures the broadest range of media handling, up to 256 gsm and up to 52 inches long. Print almost everything.
- **Indoor/outdoor substrate durability** - Print magnetic and ultra-durable water/tear proof materials suitable for both indoor and outdoor applications. Reliably print signage, labels, packing slips, and more within warehouse and production environments.
- **Superior print speeds** - Time matters and the LP654C is ready to meet those demands, printing up to 35 pages a minute, with ease.
- **Extremely compact size** - Space saving technology means it requires minimal operating space - just 0.8" each side of the device. Full-front access means the LP654C is ideal for production lines, kiosks, and other difficult to reach areas.
- **Exceptional print quality** - With true 1200 x 1200 dpi LED print heads and ProQ technology the LP654C provides outstanding output everytime.
- **World-class service and support** - Printronix has been addressing global customer needs for mission-critical printing for more than 45 years, delivering customized solutions and services to support and improve uptime in industrial environments.



* Check compatibility of specialty media with Printronix

LP654C

Product Specifications

PRINT SPEED

Print speed	35ppm color/mono
Time to first print	6.5 seconds color/mono
Warm up time	≤20 seconds from power on ≤11 seconds from power save

PRINT QUALITY

Resolution	1200 x 1200 dpi
Enhancements	Auto Color Balance, Photo Enhance via Driver (Windows PCL6 driver only)

DUTY CYCLE

Maximum:	100,000 pages/month;
Average:	10,000 pages/month

MEMORY

1 GB RAM; 3GB eMMC

CONNECTIVITY/INTERFACES

Standard	10/100/1000 Base Ethernet, USB 2.0 Device, USB 2.0 Host x 1
Optional	Wireless 802.11abgn

PRINTER LANGUAGES

PCL 6 (XL3.0) emulation, PCL 5c emulation, Epson FX Emulation, PostScript 3 emulation, PDF 2.0 emulation, IBM ProPrinter emulation

NETWORK & PROTOCOLS

All major network protocols supported via ethernet card with internal web server for printer and network card set-up and management. TCP/IPv4&v6, NetBIOS over TCP, DHCP, DHCPv6, HTTP, HTTPS, DNS, DDNS, WINS, Bonjour, SMTP, SMTPS, POP3, SNMPv1&v3, SNMP, IPP, IPPS, WSD Print, LLTD, IEEE802.1X, LPR, Port9100, Telnet, FTP, FTPS, Wireless IEEE802.11a/b/g/n, WEP, WPA, WPA2, Personal, Enterprise²

OS COMPATIBILITY³

Windows 7 (32-bit & 64-bit) and higher; Mac OS X 10.10 and higher

ADVANCED NETWORKING & SECURITY

IPv6, 802.1x authentication, SNMP V3, SSL3/TLS HTTPS encryption, Secure Print, Secure Erase, Data Encryption, IP filtering, IPsec, MAC Filtering

BARCODES & SPECIALTY FONTS

10 types of one dimension with 26 variations: UPC-A, UPC-E, EAN/JAN-8, EAN/JAN-13, Interleaved2of5, Code 39, Code 128, EAN/UCC-128, CODABAR, ZIP+4 POSTNET, 2 types of two dimensions: PDF417, QR code(Model2), LinePrinter, OCR-A/B, USPS ZIP Barcode

CONSUMABLES

CMY Toner cartridges ⁴	6,000 pages
Black Toner cartridge ⁴	7,000 pages
Image drums ⁵	50,000 pages
Transfer belt	60,000 pages
Fuser unit ⁶	60,000 pages

PAPER INPUT CAPACITY

Tray 1	250 sheets of 80g/m ² ;
Multi-purpose tray	100 sheets of 80g/m ²

PAPER CAPACITY OPTIONAL TRAYS

Tray 2/3/4: 530 sheets of 80g/m²

MAXIMUM PAPER CAPACITY

1,940 sheets of 80g/m²

PAPER SIZES

A4, A5, A6, B5, B6, B6 Half, B7, B8, Letter, Legal 13, Legal 13.5, Legal 14, Executive, Statement, 8.5" SQ, Folio, 16K, Index Card (3" x 5") (75 x 125mm), Photo Size (4" x 6", 5" x 7") (100 x 150mm, 125 x 175mm), Envelopes, Postcard, Return Postcard, Custom Size: Width 2.2-8.5" (55-216mm) x Length 3.6-52" (91-1,321mm)

PAPER WEIGHT

Tray 1, Multi-purpose tray	60 to 256g/m ² ;
Tray 2/3/4, Duplex	64 to 176g/m ² ;

PAPER OUTPUT

150 sheets face down, 100 sheets face up, 80g/m²

DUPLEX (2-SIDED PRINTING)

Standard

ENVIRONMENT (TEMPERATURE/HUMIDITY)

Operating	50°F to 90°F (10°C to 32°C), 20% to 80% RH
Storage	14°F to 109°F (-10°C to 43°C), 10% to 90% RH

POWER SUPPLY

Single phase 120VAC or 220-240VAC, frequency 50/60 Hz +/- 2%

ENVIRONMENTAL COMPLIANCE

ENERGY STAR 3.0 (TEC Value 0.57KWh)

NOISE LEVEL

Operating: 54dB(A) or less; Standby: 32dB(A) or less; Power save: Inaudible

DIMENSIONS (WxDxH)

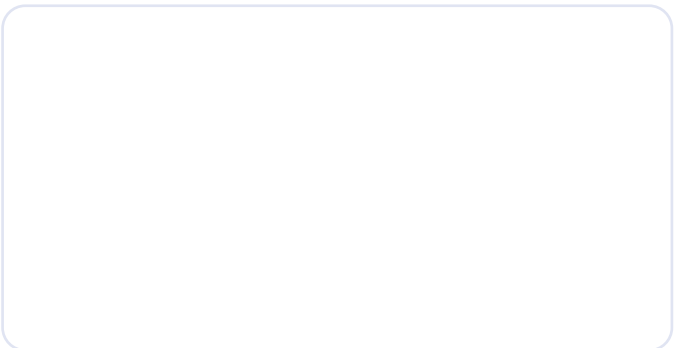
15.6" x 16.9" x 11.4" (395mm x 430mm x 290mm)

WEIGHT

Approx. 62.2 lbs (28.2kg) including all consumables¹

WARRANTY

Printer: 1 year; LED Printheads: 5 year limited warranty



¹ Printer shipped with toner for approx. 3,000 A4 pages

² Only available with Wireless Network W-LAN

³ Check Printronix website for latest driver releases and OS compaibility

⁴ Toners: A4 pages yield compliant with ISO/IEC 19798

⁵ Drum: Average number of A4 pages printed (3 pages per job)

⁶ Fuser: 3 pages per job