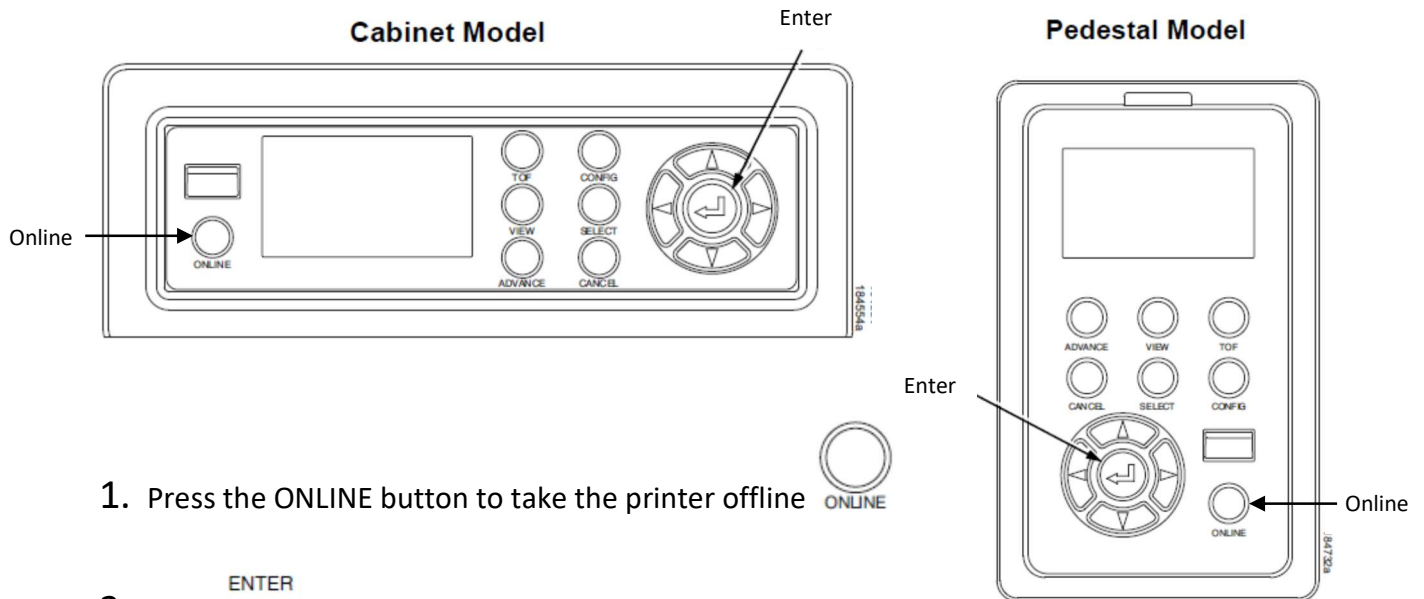



How to adjust the ribbon end point setting on a Printronix P8000

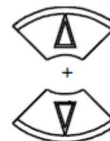


1. Press the ONLINE button to take the printer offline






2. Press  to go into Menu mode

3. Press the UP + DOWN arrows to unlock the control panel



4. Press  to get to the **Quick Setup Menu**  and press 

5. Press  until you get to **Ribbon End Point**

6. Press  until you get to desired end point setting, **Lighter -1 to Lighter -10**, and press 

7. Press the ONLINE button to put the printer back online



Ribbon End Point: This parameter adjusts the point at which the system will declare the ribbon as being expended. The life count will always be from 100% to 0%. If a lighter setting is selected the system will extend the time it takes to reach 0%. This value can be adjusted at any time, and the display will automatically adjust to show the correct % relative to the new end point.